

PERSONAL

WATER CRAFT



check
weather
forecasts

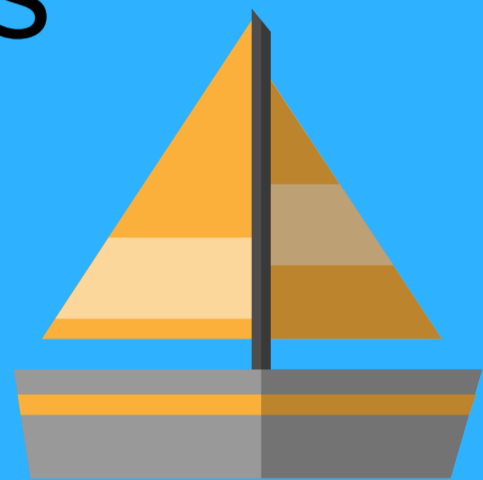


follow advise
provided by the
PWC
manufacturer

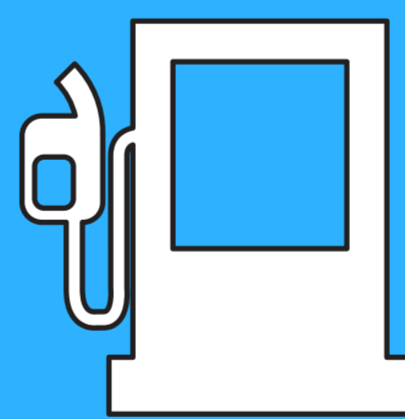
maintain contact
with Port Control
- communicate
when launching
and retrieving
craft



keep clear of
other vessels
- minimum
200m

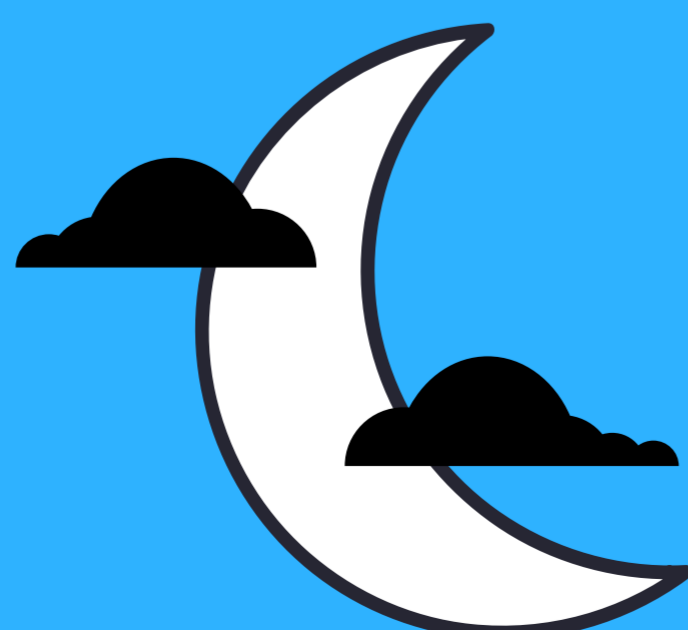


keep clear of
restricted
areas, divers,
bathers, water
skiers, wind
surfers etc.



Ensure the craft
has sufficient
fuel to get back
to shore at all
times

avoid hours
of darkness



carry
appropriate
distress
signalling
equipment

